



THE CLIFFVIEW APARTMENTS

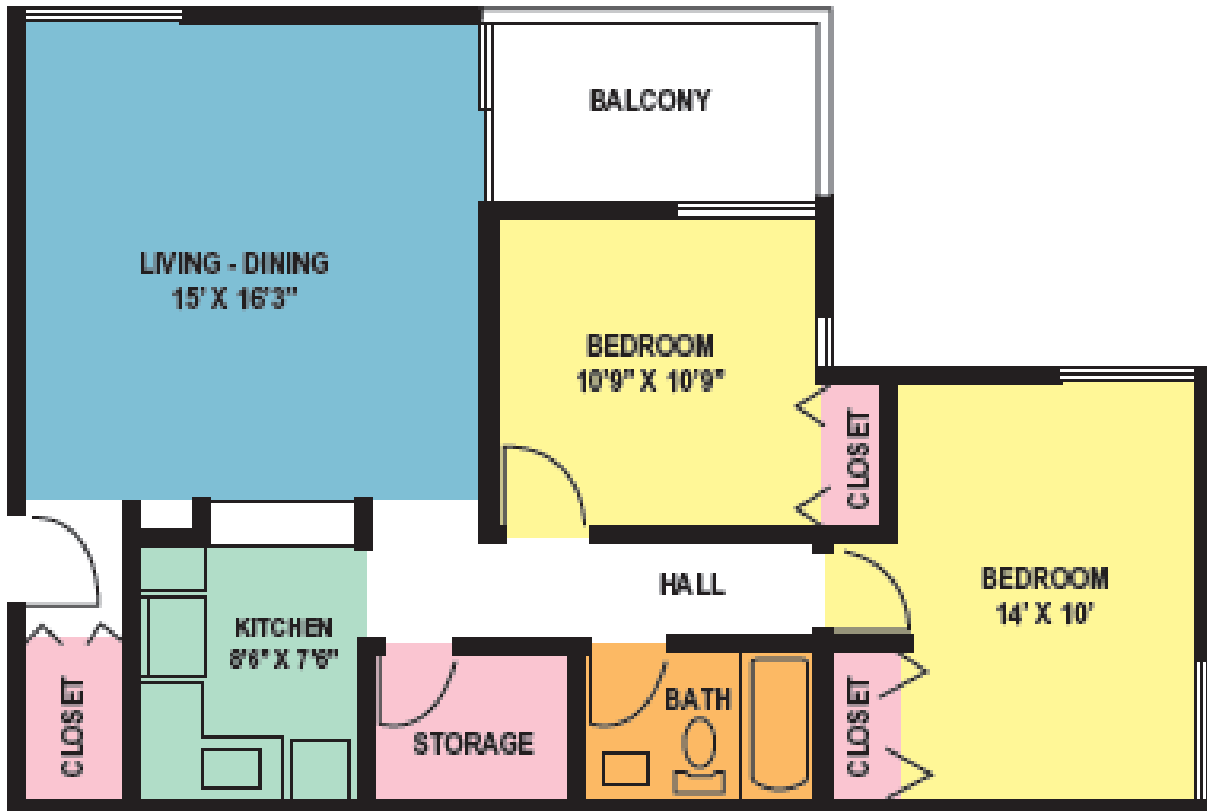
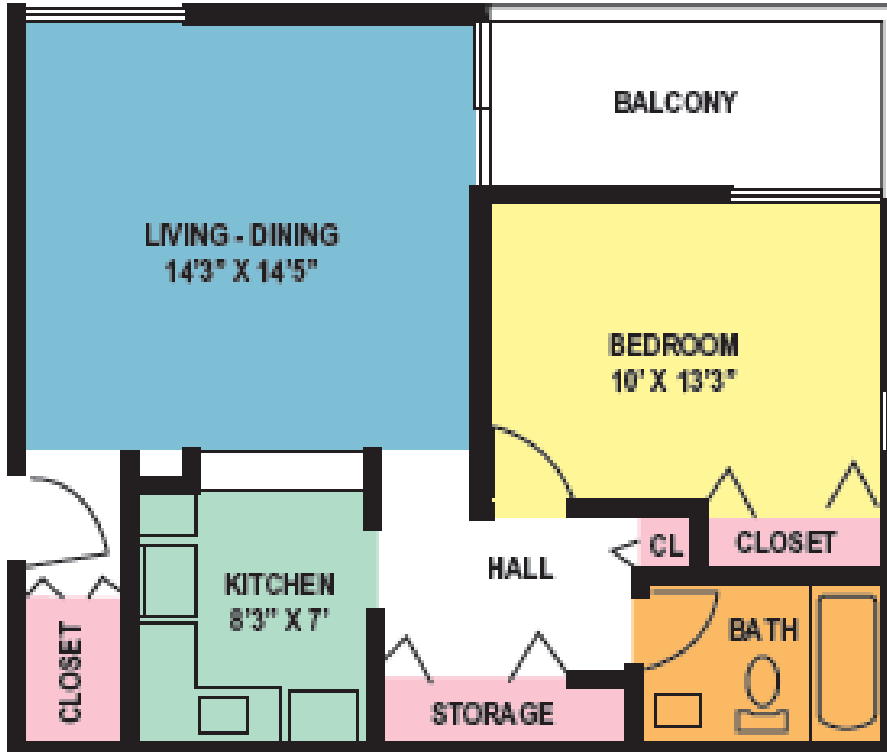
1691 Cliffview Drive

Rochester Hills, Michigan 48306

(248) 651-7665

www.CliffviewApts.com





LOCATION

The Cliffview Apartments is located on the north side of Tienken between Rochester and Livernois. We are one mile north of downtown Rochester. Centrally located between three shopping malls (Great Lakes Crossing, Lakeside and Somerset) and all the strip center shopping one could ask for. Two major grocery chains are within one mile. We are fortunate to be in close proximity to every domination of faith. The schools that service our community are Long Meadow Elementary, West Middle School and Adams High School.

SAFETY

Because we are government housing we run a credit and criminal check on everyone that applies for a rental apartment. We cannot accept any applicant that has a felony.

LAUNDRY FACILITIES

The laundry facilities are located in the basement of each building. We own the washers and dryers and they are \$1 each to operate. Our laundry rooms are well lit and ample chairs are stored in the event the weather requires our residents to take cover, where they can sit comfortably until they can return to their apartments

STORAGE

Our apartments provide ample storage. Our one bedroom apartments have additional storage in the laundry room for free.

CLEANLINESS

We take pride in our community! Each day our maintenance staff makes sure our community is free of trash and debris. All common areas are cleaned on a regular basis. You will never see anyone doing car repairs in our parking lots. As an added bonus: we provide front door trash pick-up twice a week. You won't find this service anywhere else.

PET POLICY

We love pet here at the Cliffview Apartments!

We allow each apartment to have (1) dog under 25 lbs. or (2) cats.

The pet fee is a one-time non-refundable fee of \$300 and we don't charge a monthly pet fee.

ROCHESTER ACTIVITIES

Rochester offers a variety of fun activities throughout the year.

- The third week in February is the Fire & Ice Fest, you will see the most interesting ice sculptures featured in front of the businesses on Main Street.
- The Farmer's Market is open each Saturday during the months of May through October. Memorial Weekend is the Heritage Festival in the Rochester Municipal Park.
- The weekend following Labor Day is Arts & Apples where you can enjoy freshly baked apple pies and fine art.
- The fourth quarter events are Lagnaipe, Kris Kringle Market, the Big Bright Light Show and we end the year with the Rochester Annual Christmas Parade televised live on WXYZ-TV Channel 7.

OLDER PERSONS COMMISSION

The OPC is located on Letica Road. They offer a variety of classes, arts and crafts along with health and wellness. Throughout the year they host dinners, dances and plays. OPC offers transportation services and they have a "Meals on Wheels" program. For more information call, (248) 656-1403.

APARTMENT HUNTING CHECKLIST

Finding the perfect apartment starts with developing a checklist of items you want to make sure to have in your rental property. Decide ahead of time which things you may be willing to compromise on and those that you simply can't do without. Remember, signing a lease usually involves a time commitment, so you'll want to be sure the place is a good fit before making any final decisions. Take your time, and don't allow anyone to pressure you. Compare the properties you are considering using the checklist below and see which one best suits your needs and lifestyle. Rate each category on a 1 – 10.

Location of Community: _____

Layout of the apartment: _____

Safety: _____

Laundry Facilities: _____

Storage: _____

Cleanliness: _____

Pet Policy: _____

We look forward to having you as our new resident here at the Cliffview Apartments.

